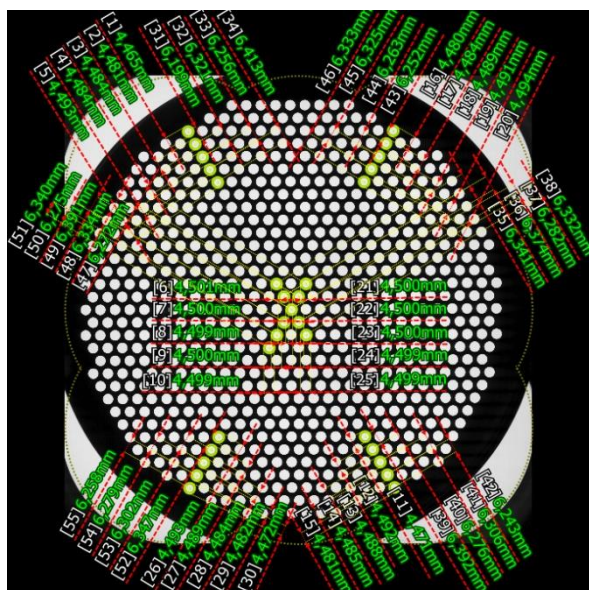
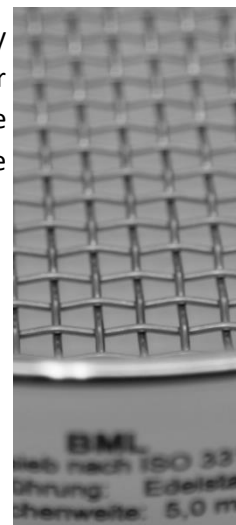


Classified as measuring instruments, laboratory test sieves are subject to the highest quality regulations and, as such, have to be regularly monitored with respect to their compliance with their respective standard. Regular inspections or re-certification ensures that sieves, even under intense use, maintain the required tolerances to minimize deviations in screening results and enable reproducible sieving results over an extended period.

### Blau-Metall offers Re-Certification of Test Sieves as a simple and cost-efficient Service:

Re-certification is carried out in accordance with the instrumentation and methodology specified in and the inspection certificate is issued within the guidelines of the respective standard. Inspection via modern Image Dimension Measurement Technology enables complete metrological traceability and compliance with national / international standards

Full documentation is provided to the customer in the form of Inspection Certificates 3.1 in accordance with **EN 10204**, satisfying the requirements of quality assurance standards such as ISO 9001. Documents are available in digital and printed form.



<b>Measuring Instrument</b>	Digital Image Dimension Measurement System Keyence IM-7000 Series	
<b>Sieve Types</b>	<ul style="list-style-type: none"> <li>• Woven Wire Mesh</li> <li>• Round Apertures</li> <li>• Square Apertures</li> <li>• Slotted Apertures (Oblong)</li> <li>• Others (z.B. Triangular Apertures) on Request</li> </ul>	
<b>Standards</b>	<ul style="list-style-type: none"> <li>• ISO 3310-1</li> <li>• EN ISO 5223</li> <li>• ASTM E 11</li> </ul>	<ul style="list-style-type: none"> <li>• ISO 3310-2</li> <li>• DIN 24041</li> <li>• ASTM E 323</li> </ul>
<b>Sieve Frame Diameter</b>	50 to 400 mm	
<b>Nominal Sieve Openings</b>	63 µm to 125 mm	
<b>Measurement Repeatability</b>	±2 µm (Standard Mode), ±0.5 µm (Precision Mode)	

Re-certification of up to 25 sieves is typically completed within one week after we receive the items (contact us for concrete information on turnaround times). We ask for prior consultation for re-certifications that may require extensive programming efforts. For re-certification, we ask that customers send cleaned sieves, otherwise additional cost may arise. A declaration of contamination has to be provided by the customer with the shipment of sieves, the form [is available for download on our website](#).

## PRICE LIST – RE-CERTIFICATION (2025/2026)

<b>Certification of Test Sieves</b>								
	<b>Blau-Metall Sieves</b>				<b>Other Manufacturers</b>			
<b>Sieve Diameter</b>	≤ 150 mm	≤ 203 mm	≤ 315 mm	≤ 400 mm	≤ 150 mm	≤ 203 mm	≤ 315 mm	≤ 400 mm
<b>EURO/Pcs.</b>	17,50	25,00	43,00	59,00	24,00	35,00	55,00	70,00
<b>Calibration of Test Sieves</b>								
	<b>Blau-Metall Sieves</b>				<b>Other Manufacturers</b>			
<b>Sieve Diameter</b>	≤ 150 mm	≤ 203 mm	≤ 315 mm	≤ 400 mm	≤ 150 mm	≤ 203 mm	≤ 315 mm	≤ 400 mm
<b>EURO/Pcs.</b>	35,00	50,00	90,00	125,00	45,00	65,00	115,00	155,00
Prices subject to change, Each order will also require a variable flat fee of € 25,00 to € 100,00								